

**Article title:** Inpatient Care Costs of COVID-19 in South Africa’s Public Healthcare System

**Journal name:** International Journal of Health Policy and Management (IJHPM)

**Authors’ information:** Ijeoma Edoaka<sup>1\*</sup>, Heather Fraser<sup>1</sup>, Lise Jamieson<sup>2</sup>, Gesine Meyer-Rath<sup>2,3</sup>, Winfrida Mdewa<sup>1</sup>

<sup>1</sup>SAMRC Centre for Health Economics and Decision Science-PRICELESS SA, School of Public Health, Faculty of Health Sciences, University of the Witwatersrand, Johannesburg, South Africa.

<sup>2</sup>Health Economics and Epidemiology Research Office, Department of Internal Medicine, School of Clinical Medicine, Faculty of Health Sciences, University of the Witwatersrand, Johannesburg, South Africa.

<sup>3</sup>Department of Global Health, School of Public Health, Boston University, Boston, MA, USA.

(\*Corresponding author: [Ijeoma.Edoka@wits.ac.za](mailto:Ijeoma.Edoka@wits.ac.za))

#### Supplementary File 4

##### *Scenario analysis results*

Figures S1-S6 present the results of each of the series of scenario analyses, in the form of tornado diagrams.



*Figure S1 Scenario analysis for general wards with no oxygen - financial cost (A) and economic cost (B) per patient per day (excluding facility fee)*

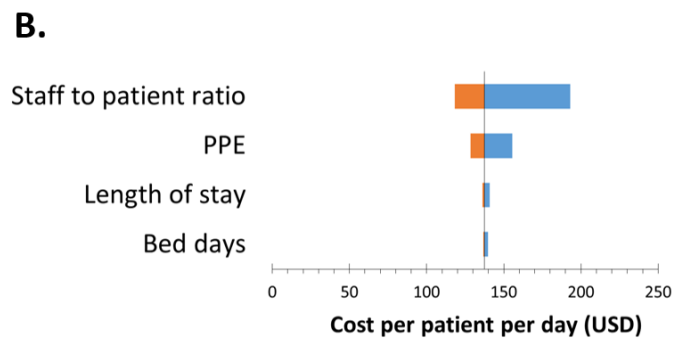
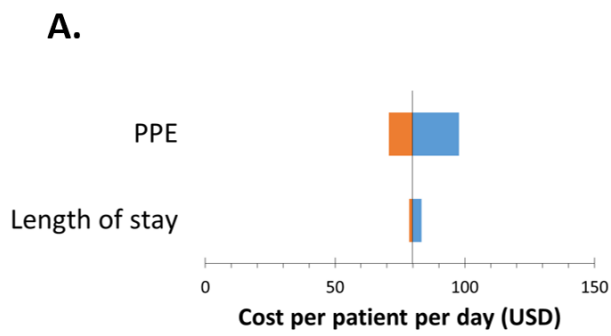


Figure S2. Scenario analysis for patients in general wards with oxygen - financial cost (A) and economic cost (B) per patient per day (excluding facility fee)

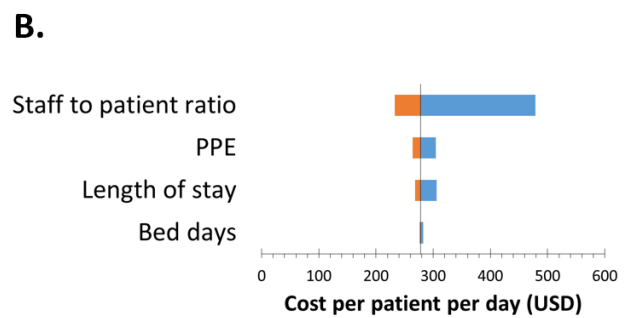
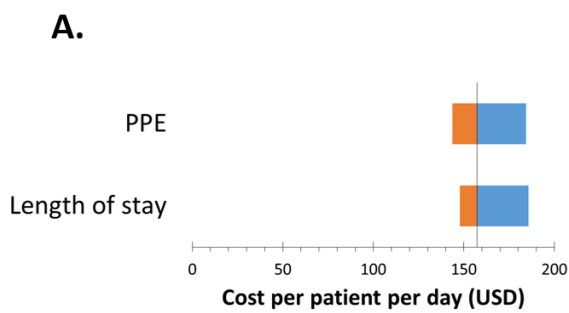


Figure S3. Scenario analysis for high care wards with high flow nasal oxygen - financial cost (A) and economic cost (B) per patient per day (excluding facility fee)

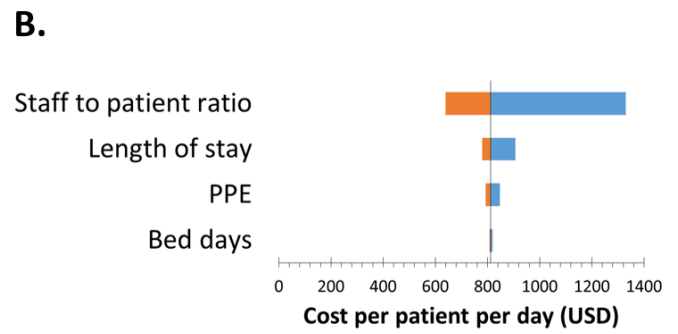
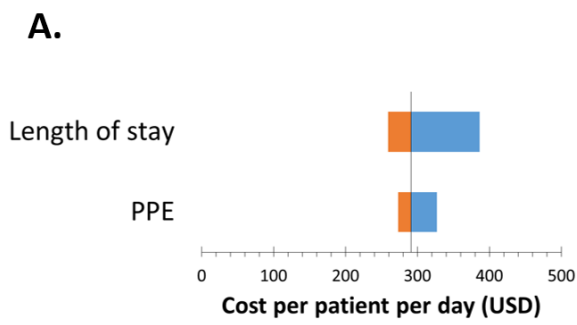


Figure S4. Scenario analysis for ICU with CPAP - financial cost (A) and economic cost (B) per patient per day (excluding facility fee)

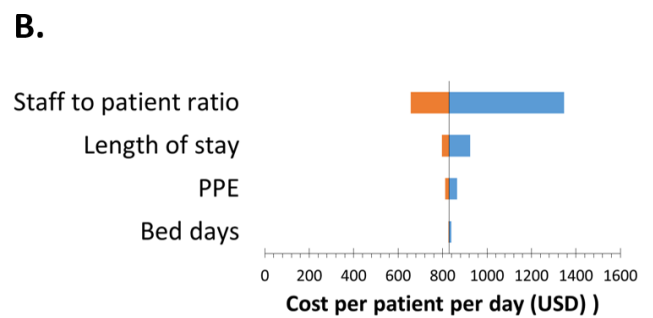
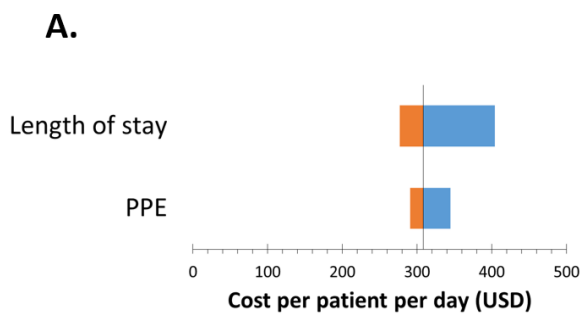
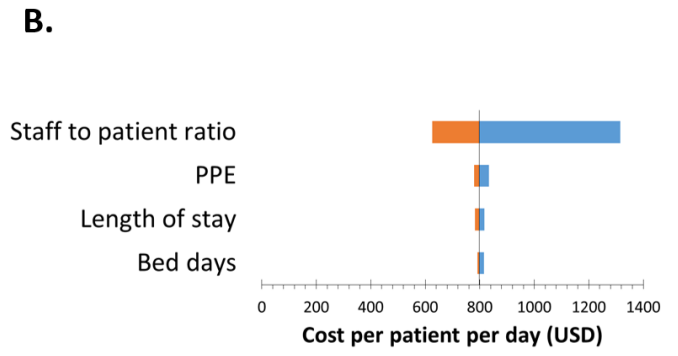
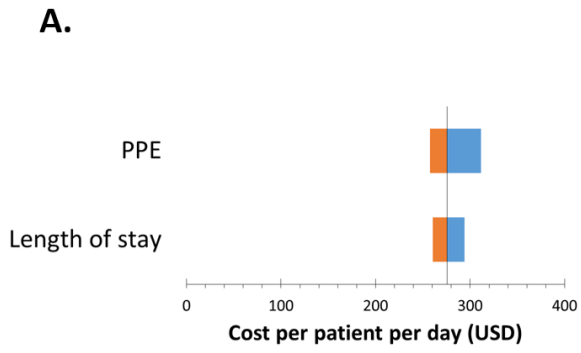


Figure S5. Scenario analysis for ICU with NIV - financial cost (A) and economic cost (B) per patient per day (excluding facility fee)



*Figure S6. Scenario analysis for ICU with invasive mechanical ventilation - financial cost (A) and economic cost (B) per patient per day (excluding facility fee)*