

**Article title:** Improving Access to Surgery Through Surgical Team Mentoring – Policy Lessons From Group Model Building With Local Stakeholders in Malawi

**Journal name:** International Journal of Health Policy and Management (IJHPM)

**Authors' information:** Henk Broekhuizen<sup>1,2</sup>, Martilord Ifeanyi<sup>1</sup>, Gerald Mwapasa<sup>3</sup>, Chiara Pittalis<sup>4</sup>, Patrick Noah<sup>3</sup>, Nyengo Mkandawire<sup>3</sup>, Eric Borgstein<sup>3</sup>, Ruairí Brugha<sup>5</sup>, Jakub Gajewski<sup>4</sup>, Leon Bijlmakers<sup>1\*</sup>

<sup>1</sup>Radboud Institute for Health Sciences, Radboud University Medical Centre, Nijmegen, The Netherlands.

<sup>2</sup>Department of Health and Society, Wageningen University and Research, Wageningen, The Netherlands.

<sup>3</sup>College of Medicine, Blantyre, Malawi.

<sup>4</sup>Institute of Global Surgery, Royal College of Surgeons in Ireland, Dublin, Ireland.

<sup>5</sup>Department of Epidemiology and Public Health Medicine, Royal College of Surgeons in Ireland, Dublin, Ireland.

(\*Corresponding author: [Leon.Bijlmakers@radboudumc.nl](mailto:Leon.Bijlmakers@radboudumc.nl))

**Supplementary file 4.** Sensitivity Analysis of Parameter Effects on Cost of Surgery for District Hospitals (Figures A11-A15)

Figure A11: Impact of percentage\_avoided\_that\_conservative on dh\_costs\_surgery

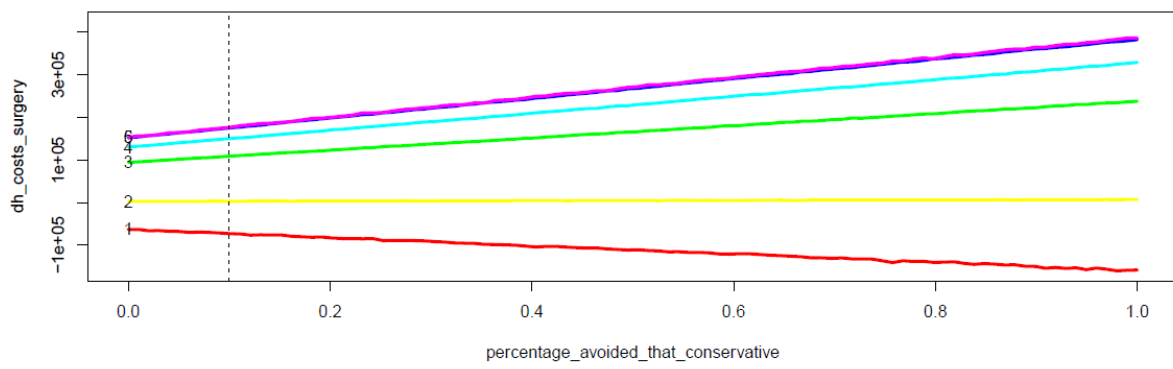
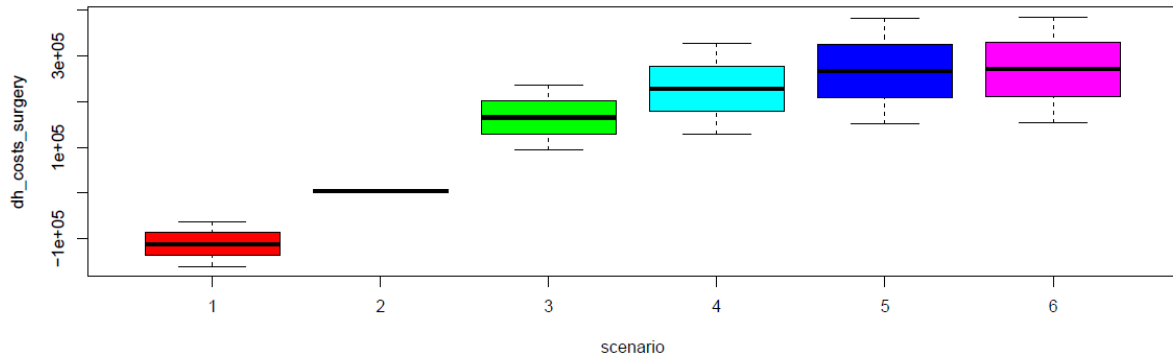


Figure A12: Impact of percentage\_costs\_ward on dh\_costs\_surgery

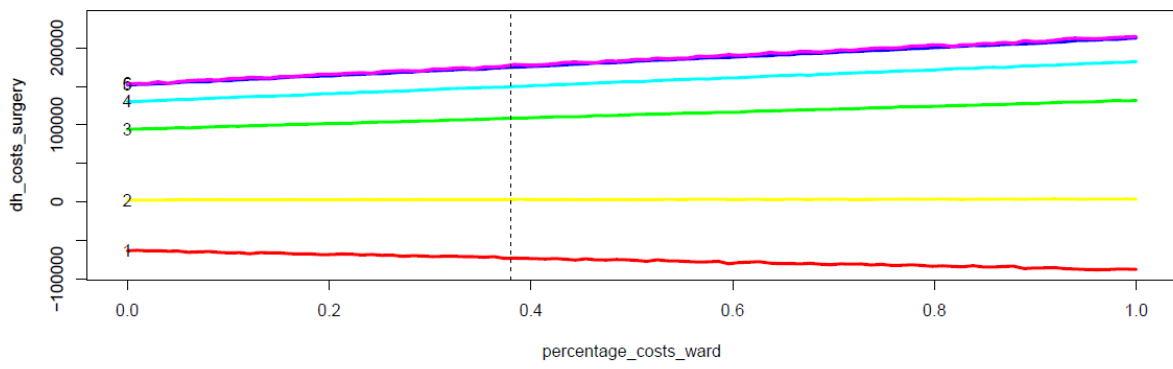
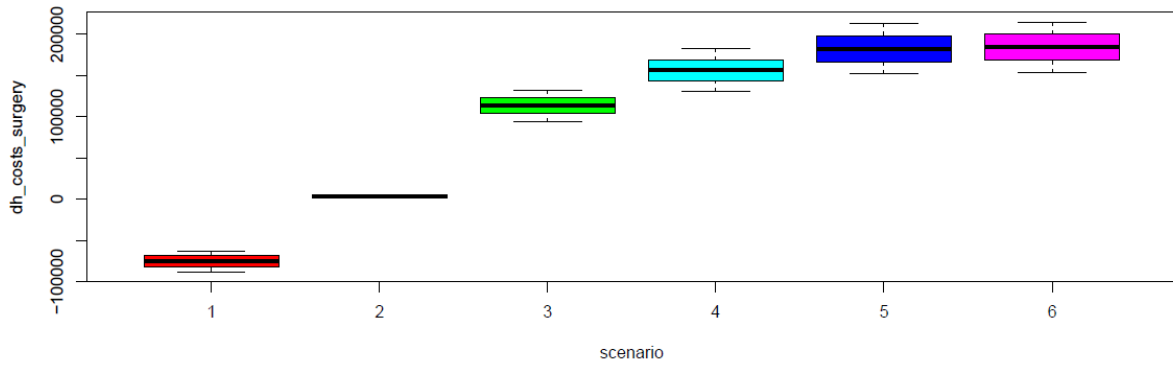


Figure A13: Impact of percentage\_avoided\_operated\_locally on dh\_costs\_surgery

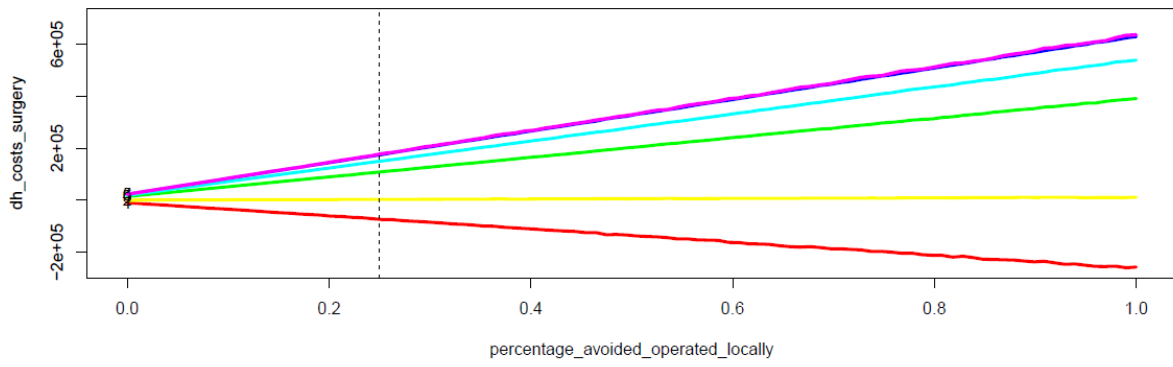
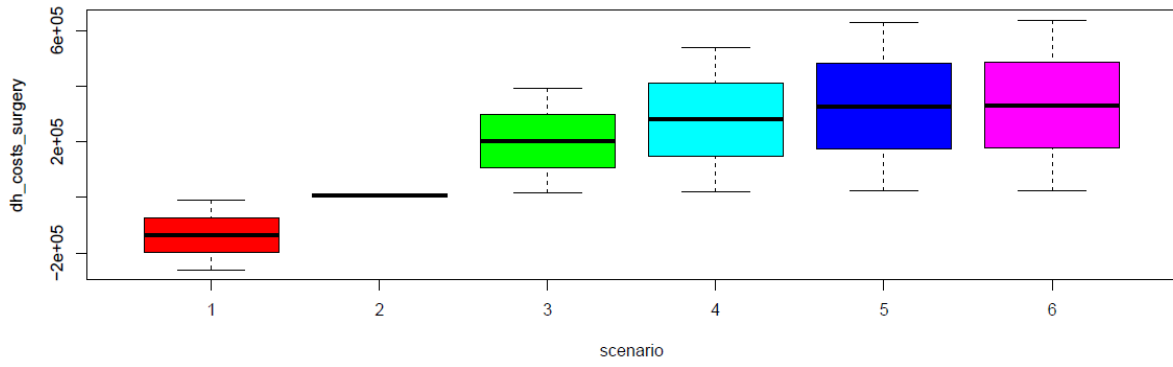


Figure A14: Impact of percentage\_referrals\_surgical on dh\_costs\_surgery

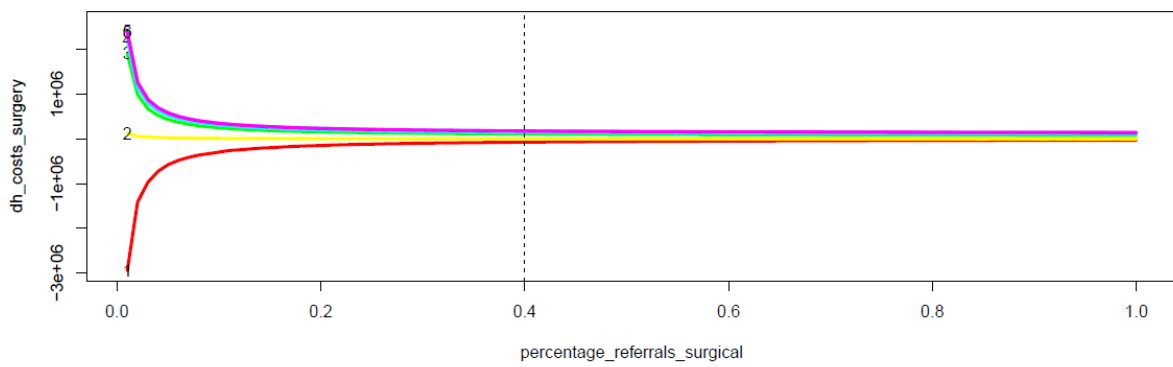
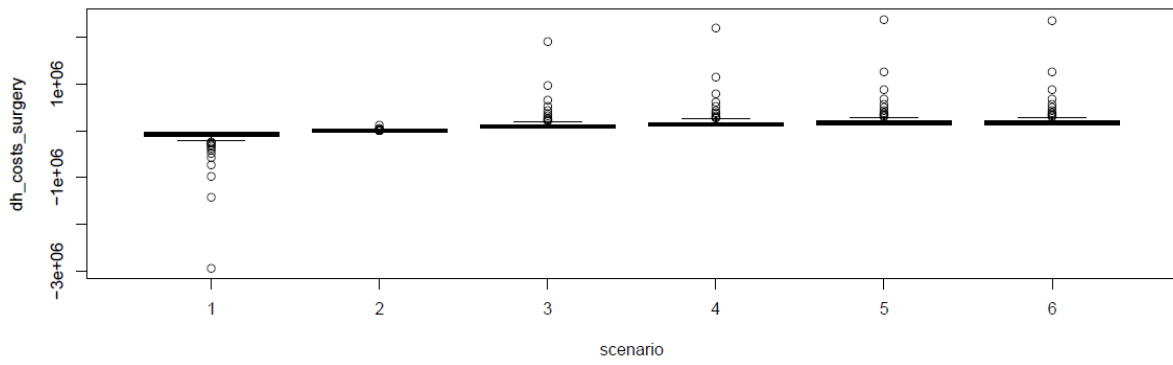


Figure A15: Impact of effectiveness\_constant on dh\_costs\_surgery

